

## At a Glance:

- SteerVu™ is an advanced, Global Positioning System (GPS) based, auto-steering package utilized for applications requiring centimetre level accuracy in real-time.
- SteerVu™ utilizes GNT's auto-steering logic controller to guide a vehicle automatically to the target location.
- SteerVu™ can improve the efficiency and safety of loading operations by taking the guesswork out of steering.

## Features:

- Instantaneous vehicle navigation with horizontal positioning accuracies up to  $\pm 1$  cm
- Solution update rates up to 10 Hz
- Map-and-match approach suitable for replicating complex routes
- Utilizes a local Wi-Fi communications network to avoid costly network charges
- Compatible with CAN communications protocol

## Systems Integration:

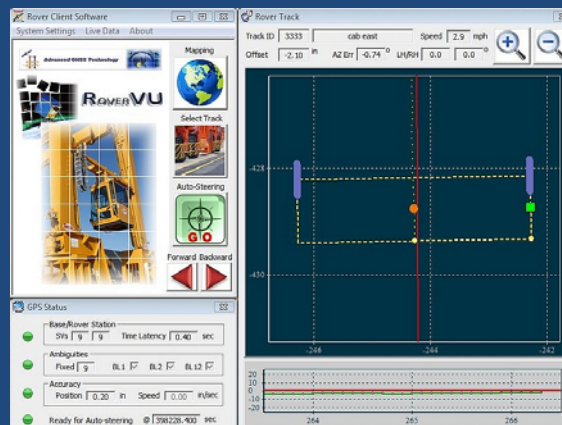


No two GPS environments are the same. Whether you are faced with multipath reflections from a nearby reflector, residual tropospheric delay biases caused by large height differences or other unique circumstances, GNT takes pride in its ability to address the challenges of your application.

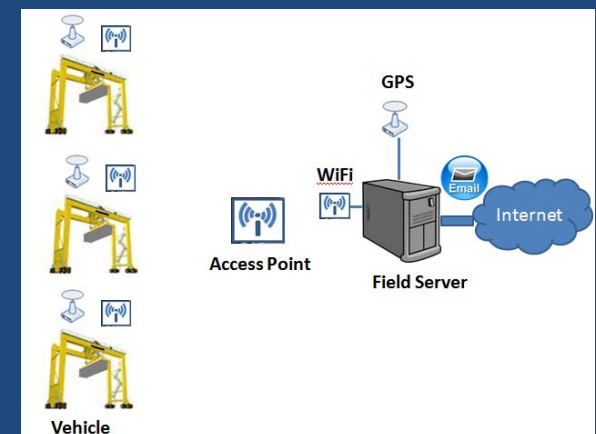
## GPS Rover Station:

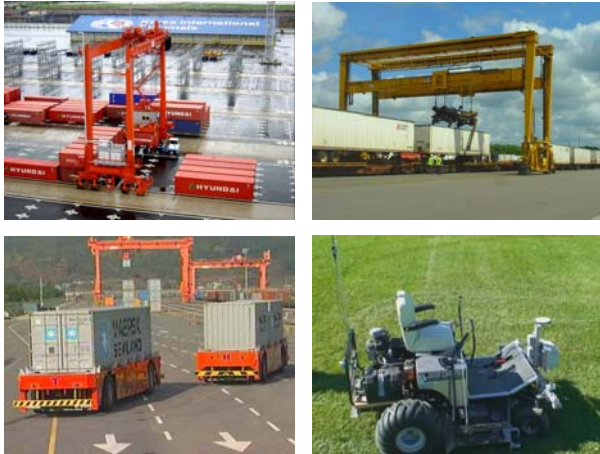


## SteerVu™:



## Typical Field Setup:





**GEMINI**  
Navsoft Technologies Inc.



**SteerVu™**

## Applications

**SteerVu™** can be used to automate repetitive machine steering tasks including guidance of:

- Rubber-Tired Gantry Cranes
- Automated Ground Vehicles
- Robotic Vehicles
- Lawn Mowers
- Snow Removal Equipment
- Agricultural Machinery
- Construction Equipment
- Loading Equipment

## Contact Information

20 Barrett Court  
Fredericton, NB  
Canada  
E3B 6Y1

1.506.206.2312

[admin@gemini-navsoft.com](mailto:admin@gemini-navsoft.com)

**Machine Control and  
Auto-Steering System**